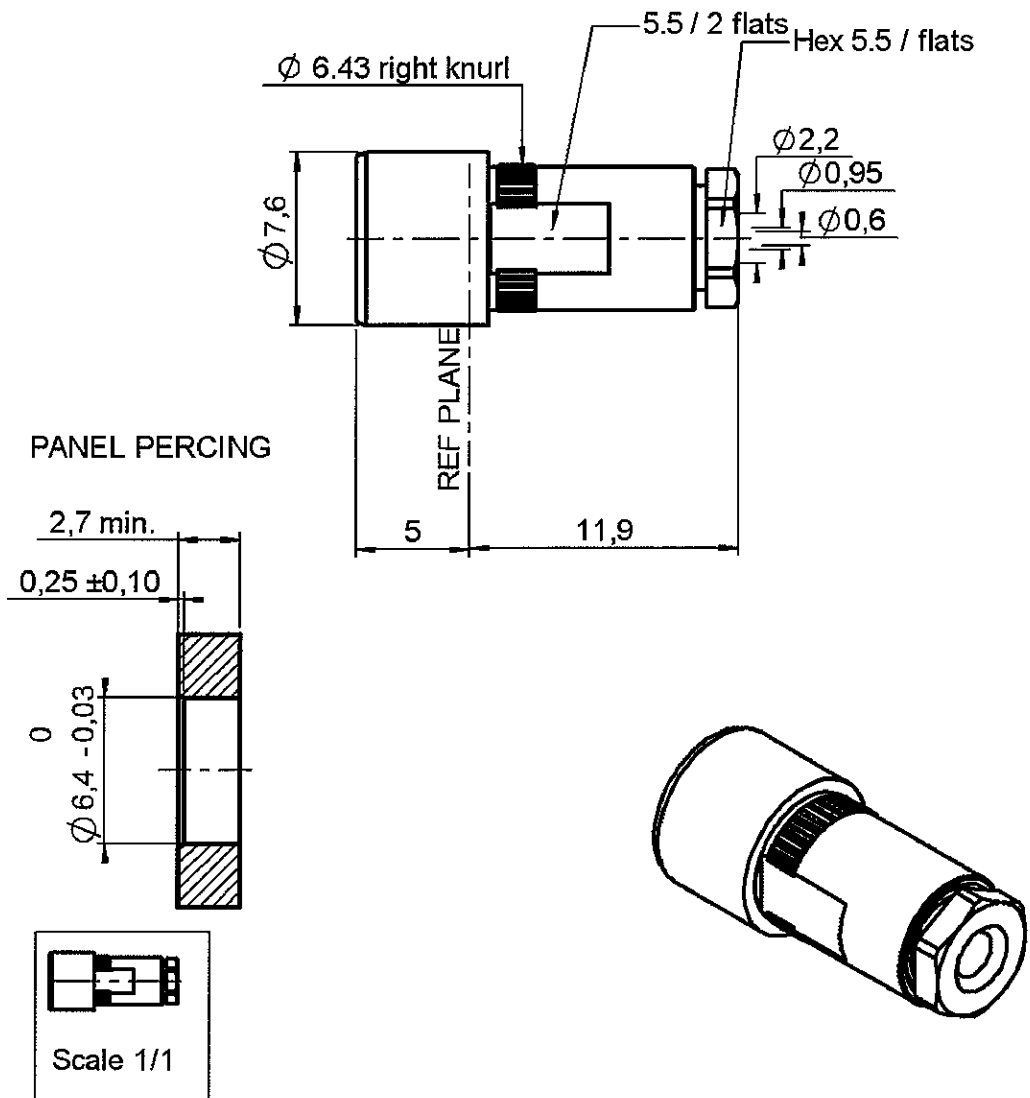


STRAIGHT JACK CLAMP TYPE

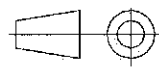
R128.203.011

PRESS MOUNT - CABLE 2/50 S

Series : BMA



All dimensions are in mm.



| COMPONENTS | MATERIALS | PLATINGS (µm) |
|----------------|------------------|------------------------|
| BODY | STAINLESS STEEL | PASSIVATED . |
| CENTER CONTACT | BERYLLIUM COPPER | GOLD 2.5 OVER NICKEL 2 |
| OUTER CONTACT | BERYLLIUM COPPER | GOLD 1.3 OVER NICKEL 2 |
| INSULATOR | PTFE | |
| GASKET | - | |
| OTHERS PARTS | STAINLESS STEEL | PASSIVATED . |
| - | - | - |
| - | - | - |

Issue : 0605 B

In the effort to improve our products, we reserve the right to make changes judged to be necessary.



STRAIGHT JACK CLAMP TYPE

R128.203.011

PRESS MOUNT - CABLE 2/50 S

Series : BMA

PACKAGING

| Standard | Unit | Other |
|----------|------------|------------|
| 100 | 'W' option | Contact us |

SPECIFICATION

ELECTRICAL CHARACTERISTICS

| | | |
|---------------------------------|---------------|------------------|
| Impedance | 50 | Ω |
| Frequency | 0-12.4 | GHz |
| VSWR | 1.25 + 0,0700 | x F(GHz) Maxi |
| Insertion loss | 0.03 | √F(GHz) dB Maxi |
| RF leakage | - (NA | - F(GHz) dB Maxi |
| Voltage rating | 250 | Veff Maxi |
| Dielectric withstanding voltage | 750 | Veff mini |
| Insulation resistance | 5000 | MΩ mini |

CABLE ASSEMBLY

| Stripping | a | b | c | d | e | f |
|-----------|------|------|------|------|------|------|
| mm | 1,40 | 2,20 | 3,70 | 3,20 | 2,30 | 0,00 |

Assembly instruction :

Recommended cable(s)
 RG 178
 RG 196
 RG 178 LC
 KX 21

MECHANICAL CHARACTERISTICS

| | | |
|----------------------------|----|-----------|
| Center contact retention | | |
| Axial force – Mating end | 27 | N mini |
| Axial force – Opposite end | 27 | N mini |
| Torque | NA | N.cm mini |

Cable retention

| | | |
|------------|----|--------|
| - pull off | 40 | N mini |
| - torque | NA | N.cm |

TOOLING

| Part Number | Description | Hexagon |
|-------------|-------------|---------|
| . | . | . |

Recommended torque

| | | |
|---------------|--------|------|
| Mating | NA | N.cm |
| Panel nut | NA | N.cm |
| Clamp nut | 100 | N.cm |
| A/F clamp nut | 5,5000 | mm |

| | | |
|-------------|--------|-------------|
| Mating life | 1000 | Cycles mini |
| Weight | 2,7500 | g |

OTHERS CHARACTERISTICS

ENVIRONMENTAL

| | | |
|-----------------------|----------|-----------|
| Operating temperature | -65/+125 | ° C |
| Hermetic seal | NA | Atm.cm3/s |
| Panel leakage | NA | |

Issue : 0605 B

In the effort to improve our products, we reserve the right to make changes judged to be necessary.



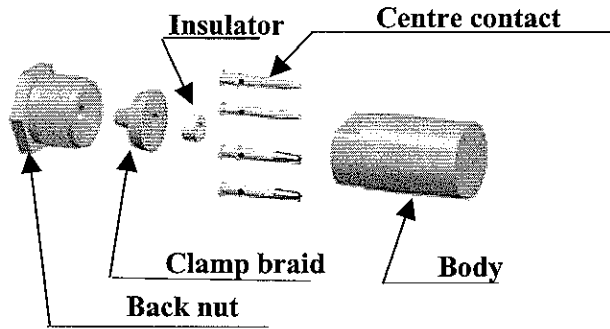
STRAIGHT JACK CLAMP TYPE

R128.203.011

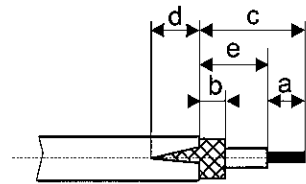
PRESS MOUNT - CABLE 2/50 S

Series : BMA

COMPONENTS

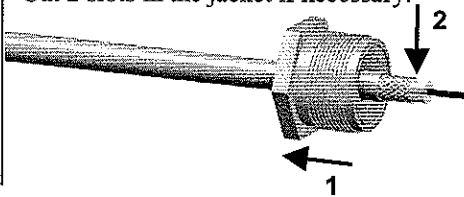


STRIPPING DIMENSIONS



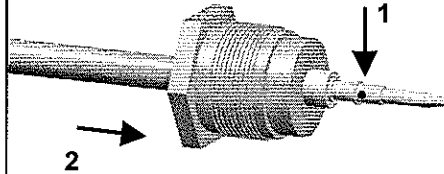
1

Slide the back nut onto the cable.
Strip the cable.
Cut 2 slots in the jacket if necessary.



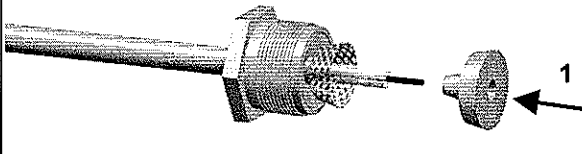
4

Solder the centre contact onto the inner conductor.
Slide the back nut over the cable assembly.



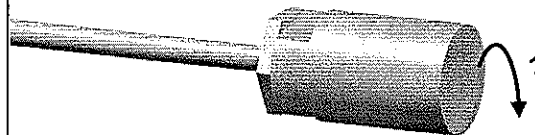
2

Slide the clamp braid sleeve between the cable dielectric and the braid.



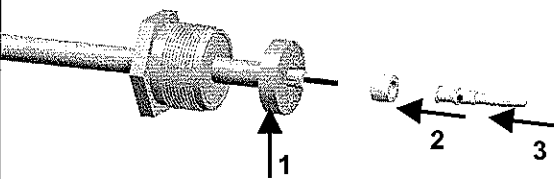
5

Screw sub-assembly into the connector body with the adapted wrench.
Recommended coupling torque (see connector TDS).



3

Cut the braid flush with the clamp braid sleeve.
Slide the spacer onto the cable.
Slide the centre contact on until it bottoms against the cable dielectric.



Issue : 0605 B

In the effort to improve our products, we reserve the right to make changes judged to be necessary.



RADIALL®